

DEPARTMENT OF COMPUTATION, UMIST

---

Software for Microsoft Windows 98, Me, 2000 & XP

# Symbol Set Wizard

Version 1.0

© Department of Computation, UMIST 2004

---

## **LICENSE AGREEMENT**

This software is freely distributable. You may install the software on as many machines as you like. You may make copies of the program and pass it to others. The only restriction is that you may not make financial gain from the distribution of the software and you must pass a copy (either electronic or paper) of the first page of this manual.

## **DISCLAIMER (THE LEGAL STUFF)**

This software is supplied 'as is'. Its developers provide no warranty, whether express or implied, of the merchantability of the software or its fitness for any particular purpose. In no circumstances will the developers be liable for any damage, loss of profits, good-will or for any indirect or consequential loss arising out of your use of the software, or inability to use the software, even if the developers have been advised of the possibility of such loss.

## **MAKING IT BETTER**

This software has been developed so that it can be used with a wide variety of clients. If you have any suggestions for extending the functionality of the software, or for making it easier to use, please contact us at the address given below. If you find any bugs, please pass the details on to us.

## **SUPPORT**

This software is supplied free of charge and support is limited to the best efforts of its developers. If you have problems you should contact:  
e-mail: [webbie@co.umist.ac.uk](mailto:webbie@co.umist.ac.uk)

## **SYSTEM REQUIREMENTS**

PC compatible with Windows 98, Me, 2000 and XP.

---


# Table of Contents


<b>Introduction.....</b>	<b>1</b>
<b>Important Note</b>	<b>1</b>
<b>Running the Installer</b>	<b>2</b>
<b>Actions during the Installation</b>	<b>2</b>
<b>Exiting the Wizard</b>	<b>3</b>
<b>Step 1 of 4 – Pointing to the Images</b>	<b>3</b>
<b>Step 2 of 4 – Choosing Image File Type</b>	<b>5</b>
<b>Step 3 of 4 – Dealing With Exceptions</b>	<b>6</b>
<b>Step 4 of 4 – Choosing the Symbol Set Name</b>	<b>8</b>

---


## Introduction

### ICON KEY

 Valuable information

 Floppy disc / CD / Hard Disk

 Mouse

 Keyboard

This manual uses the icons above to highlight the actions and content of the accompanying diagrams and text.

**S**ymbol Set Wizard is a supplementary program to **EdWord** and **EdWeb**. It helps you create **Symbol Sets**. This program is needed because neither **EdWord** nor **EdWeb** is supplied with a set of symbols, so you will need to either create your own set or use an existing set. If you choose to do the latter, you need to be aware of the licensing requirements of the symbol set that you use – see the section called “Important Note” below.

A **Symbol Set** is a collection of images that are used by **EdWord** and **EdWeb** to associate words with symbols. The images have to be in a certain folder and grouped alphabetically in folders. **Symbol Set Wizard** does this for you. All you have to do is point it to the original image files, which may be a set of files you have created yourself or a commercially available symbol set.

The image files must have the same name as the word you want them to be associated to. For example, the file **car.bmp** will be associated to the word **car**. The file **car 1.bmp** will be associated to the words **car 1**. The wizard can deal with the case where multiple images are associated with the same word. For example, there may be three images that can be associated with the word **car**. These might be called **car.bmp**, **car1.bmp** and **car2.bmp**. Step 3 of the symbol set up process deals with this – see later.

### Important Note

You can configure **EdWord** and **EdWeb** with the **Symbol Set Wizard** to work with the popular symbol sets available from commercial vendors. However, it is your responsibility to ensure that you have a valid license to use these symbol sets on the machine that they are installed. You should note that the **Symbol Set Wizard** takes a copy of the symbol set, placing it in the directory that you nominate (see the Section entitled “Moving the Symbol Set”). If you uninstall a symbol set from a machine (i.e. the machine no longer has a licence for the symbol set), it is your responsibility to delete the folder that contains the copy of the symbol set. You should read the conditions of the licence for your symbol set very carefully. It may be that a symbol set is installed with a particular program and only licensed to be used with that program. Again, you are responsible for the management of licences on your machines and the developers of the **Symbol Set Wizard** hold no liability.

Formaterat: Höjd: Exakt  
9,22 cm

## Installation



**S**ymbol Set Wizard can be downloaded from the Sense web site at:  
<http://www.sense.org.uk/NOF>

### Running the Installer

1. Download the installer from the Sense web site and save it on your machine.
2. When the download is complete, **Setup.exe** will be on your machine. This is the installer
3. Close all running applications and run **Setup.exe** by double clicking on it.



### Actions during the Installation

The setup program will provide a set of on-screen instructions, please follow these.

## Running the Wizard



After installing **Symbol Set Wizard** you can run it by clicking the **Start** button, then **Programs**, then **Sense**, then **EdWord and EdWeb** then **Extras** then **Symbol Set Wizard** and then click on the **Symbol Set Wizard** icon.

**Symbol Set Wizard** will now run and you should see the screen shown in [Figure 1](#). Press Next to continue.

**Borttaget:** Figure 1Figure 1



Figure 1

### Exiting the Wizard

You can close the wizard at any time by pressing Cancel.

### Step 1 of 4 – Pointing to the Images

You will see the screen shown in [Figure 2](#). The first step is to point to the folder where the image files are stored. You do this by clicking the folder button. This will pop up the Browse for Folder dialog shown in [Figure 3](#).

**Borttaget:** Figure 2

**Borttaget:** Figure 3

## RUNNING THE WIZARD



Figure 2

From this dialog you can select the folder your images are stored in. When you have selected the folder, press OK to continue.

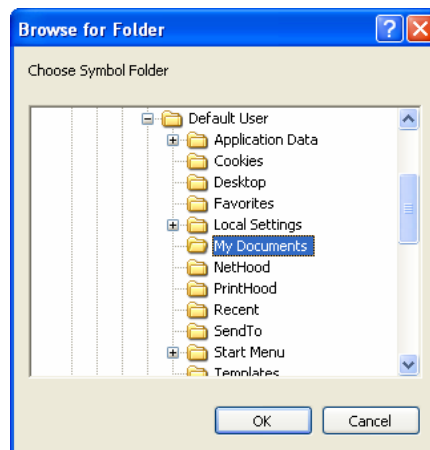


Figure 3

In case the image files are grouped in subfolders inside a parent folder, you might want to include these folders as well. To do this, select the **Include Subfolders** option by clicking on the checkbox. A small tick will indicate that the option is selected as shown in [Figure 4](#).

**Borttaget:** Figure 4

## RUNNING THE WIZARD



Figure 4

You can select another folder if you want to or uncheck the **Include Subfolders** option or press **Next** to continue.

### Step 2 of 4 – Choosing Image File Type

The second step is to choose which file types to include. You may choose from the list of the most common file types shown in Figure 5.



Figure 5

Check the types of the files you want to include individually or check **All Image Files** to include all the supported image files. Click **Next** to continue to the next step.

## RUNNING THE WIZARD

### Step 3 of 4 – Dealing With Exceptions

The third step can be skipped in many cases. However, it is not uncommon for several image files to be associated with the same word. This gives the user the opportunity to select the alternative image that s/he wants. Both **EdWord** and **EdWeb** support alternative symbol selection on the part of the user. This step is used to specify the variations to file names that pertain to the same word. So, for example, if there are three images associated with the word **car** (car.bmp, car1.bmp, and car2.bmp) you can formulate the rules that allow all three images to be associated with the same word. This is done by specifying general rules. In this case you could specify that, for the entire symbol set, any image file that has a number at the end is a valid alternative for the word without any number.



Figure 6

Figure 6 shows the 3<sup>rd</sup> step. From the list box on the left, you select the parts of the file name you want to ignore (i.e. they are valid alternatives) and press **Add** to select them. The selected items will move to the right list. In the top part of [Figure 6](#), the list box

**Borttaget:** Figure 6

## RUNNING THE WIZARD

identifies parts of the symbol image file names that may be part of alternative versions of the same symbol. This is done by the tool automatically. In this example, it suggests that filenames ending with “ dk” (e.g. man dk.bmp) and ‘ g’ e.g. (man g.bmp) may be alternative forms of the same symbol. It also says that any file name with a comma or which includes a number at the end can be treated in the same way. In the lower part of [Figure 6](#), the two options have been added. This says

**Borttaget:** Figure 6

“If you find a file ending in “ dk” or “ g”, ignore these characters and create an association to a word that is the same as the remaining of the filename”. For example, if these options are selected and the word “man dk.bmp” is found, the wizard will create an association of this file to the word “man”.

This type of specification is known as **filtering**. You can create your own **filters** by pressing on **User**. This will show the dialog shown in Figure 7. From this dialog you can:

- Add your custom filters by typing them and pressing **Add**.
- Remove them by selecting them and pressing **Remove**.
- Select to ignore numbers from a given range
- Select to treat files whose name is made up of words separated by commas as the same word.
- Set the separation character. Default is space.

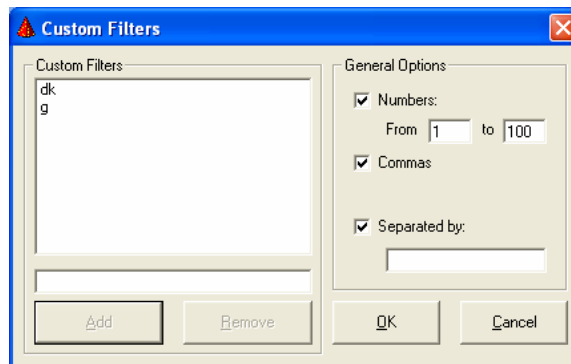


Figure 7

When you are done adding your own filters press **OK** to return to the wizard. You can select your filters as described earlier and then press **Next** to continue.

## RUNNING THE WIZARD

### Step 4 of 4 – Choosing the Symbol Set Name

In this last step all you have to do is type the name of the symbol set. The name is required so that you can select the symbol set from **EdWord and EdWeb**. You can type the name in the text box provided shown in Figure 8.



Figure 8

You can now press Next to start creating the symbol set. This might take a while depending on the options you selected and the speed of your computer. During the symbol set creation you will see the screen shown in Figure 9.



Figure 9

The lower progress bar indicates the overall progress. When the last task has finished, you will see the screen shown in Figure 10.

## RUNNING THE WIZARD



Figure 10

You can select the **View new symbol set** to show you the new files when you press on **Finish**.

## Moving the Symbol Set



The new symbol set can be found in a folder named after the symbol set in the installation folder of the **Symbol Set Wizard** which by default is:  
 C:\Program Files\Sense\EdWord and EdWeb\Extras\Symbol Set Wizard.

To activate the symbol set you have to copy it into the Symbols folder which is located at the installation folder of EdWord and EdWeb which by default is:

C:\Program Files\Sense\EdWord and EdWeb\Symbols

To do that select the folder of your symbol set from the Windows Explorer by clicking on it as shown in Figure 11. From the Edit menu select Cut.

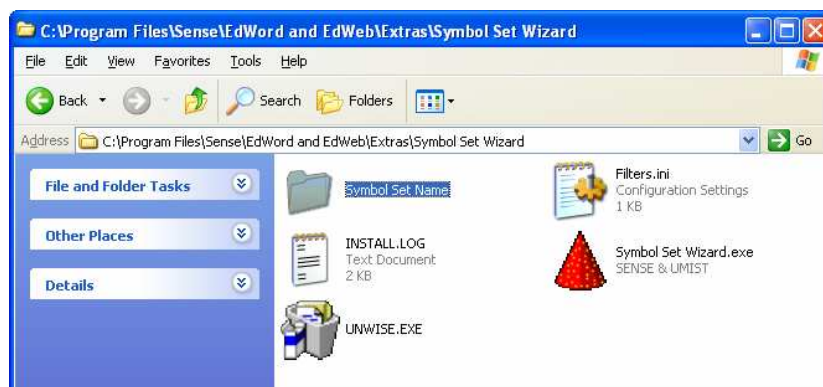


Figure 11

Go to the installation folder of EdWord and EdWeb and open the symbols folder. From the Edit menu select Paste. Your new symbol set will be moved to the correct location as shown in Figure 12. You can now use this symbol set with EdWord and EdWeb.

## RUNNING THE WIZARD

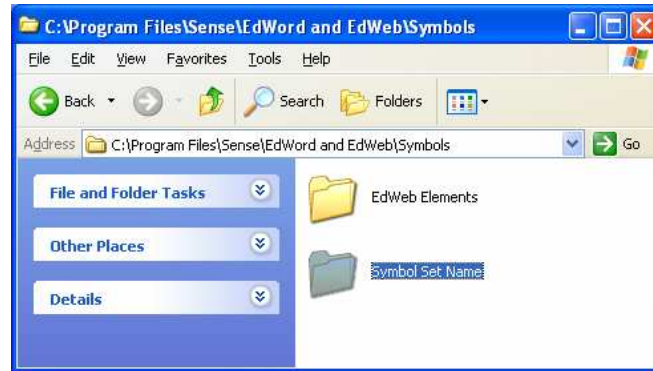


Figure 12